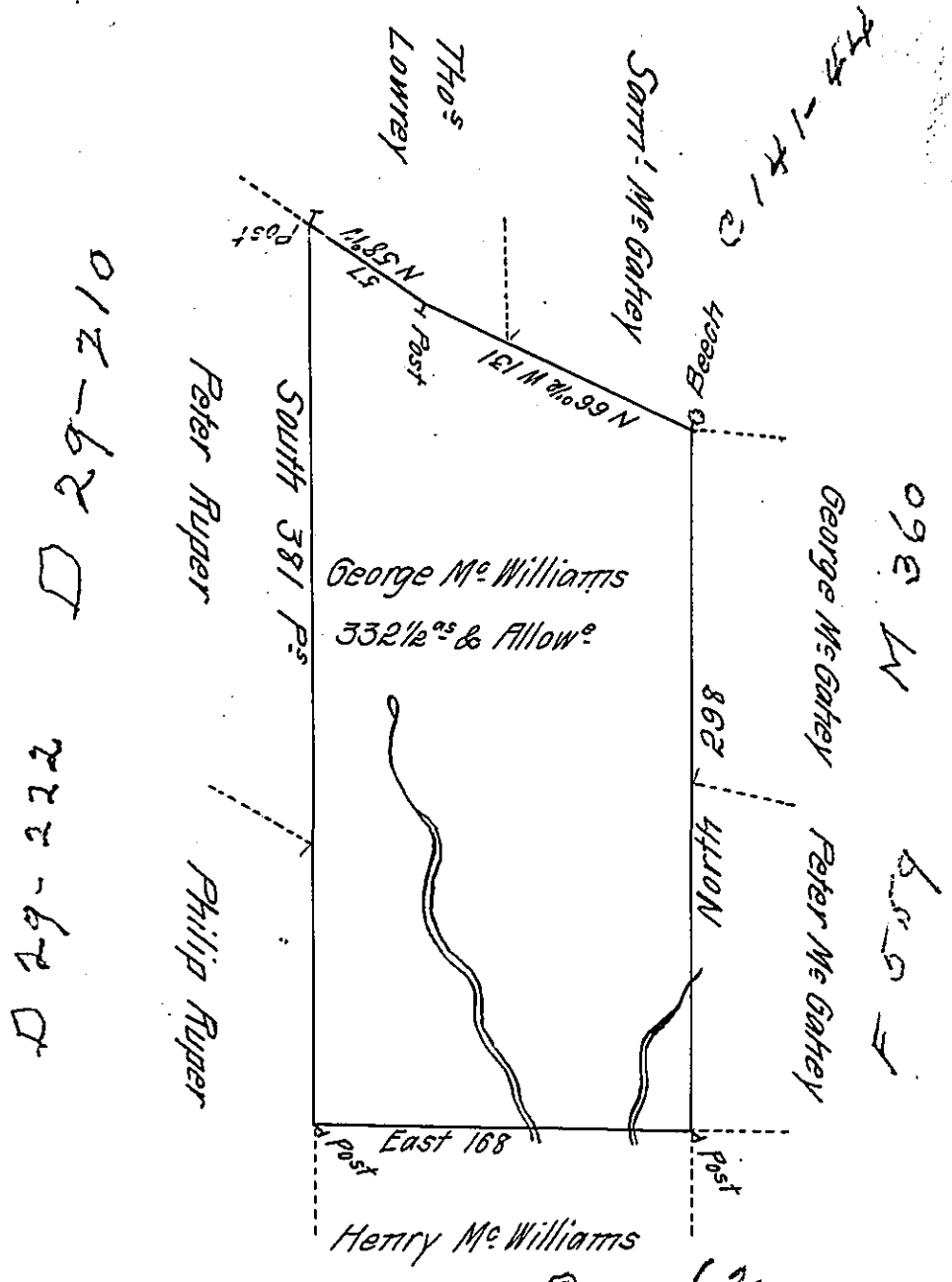


M-52



Pg 562

A Draught of a tract of land Called — Situate in the Great Bend
 Joining land Surveyed for Philip Rupper & others in Northumberland County
 Containing three Hundred & thirty two acres 1/2 & allowance of Six P Cent for Roads
 &c Surv^d for George Mc Williams the 31st Day of May 1785 in Pursuance of a
 Warrant Dated the 4th Day of April 1785.

by W^m Gray II. S.

To John Lukens Esq^r.
 Surv^r Gen^l.

IN TESTIMONY that the above is a copy of the original remaining on file in
 the Department of Internal Affairs of Pennsylvania, made
 conformably to an Act of Assembly approved the 16th day of
 February, 1833, I have hereunto set my Hand and caused
 the Seal of said Department to be affixed at Harrisburg,
 this twenty eighth day of December 1911

Henry Howard
 Secretary of Internal Affairs.